



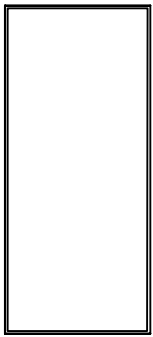
colonialelegance

HOW TO INSTALL YOUR RAIL

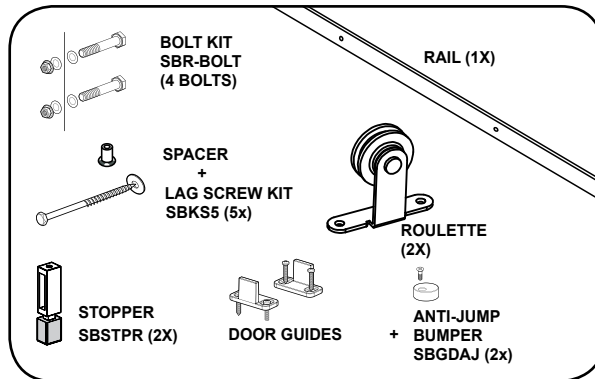
METRO COLLECTION - MURAL DOOR SYSTEM

IMPORTANT - PLEASE READ ALL INSTRUCTIONS BEFORE YOU BEGIN INSTALLATION.

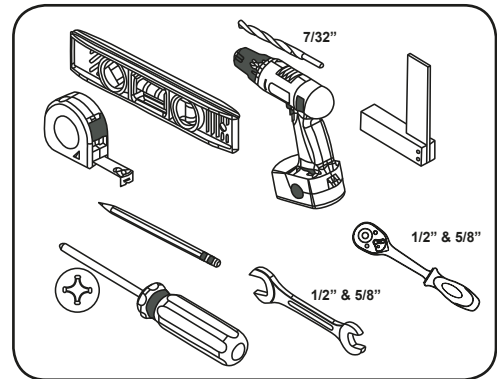
- These instructions are for a single door installation.
- Identify secure points on the wall to attach the rail before starting your installation.
- It is necessary that all the lag screws used to install the rail are secured to the wall stud (2 x 3 structure).
- Use a wood plank secured to the wall stud if you are unable to fix all lag screws in wall stud.



Door included

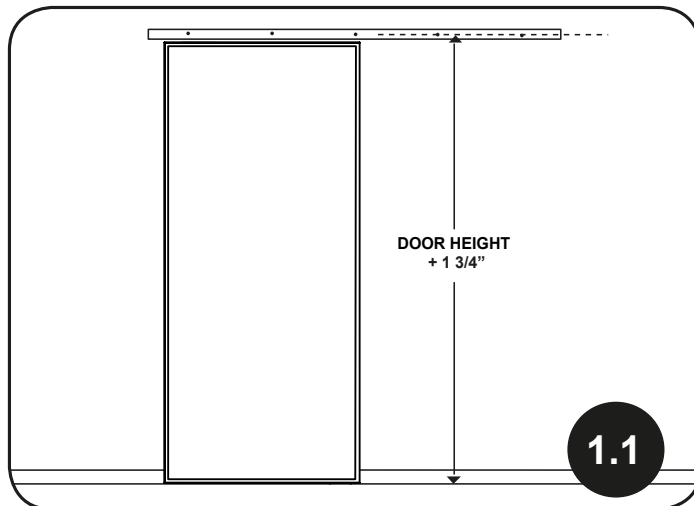


Parts included



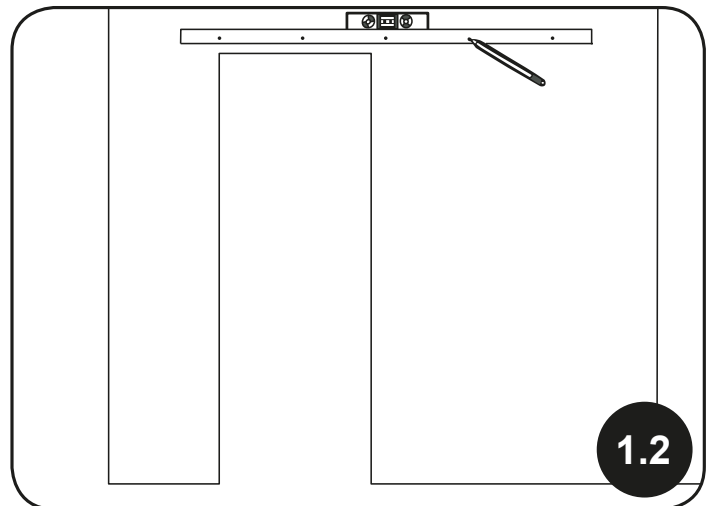
Recommended tools

1. Mounting the rail



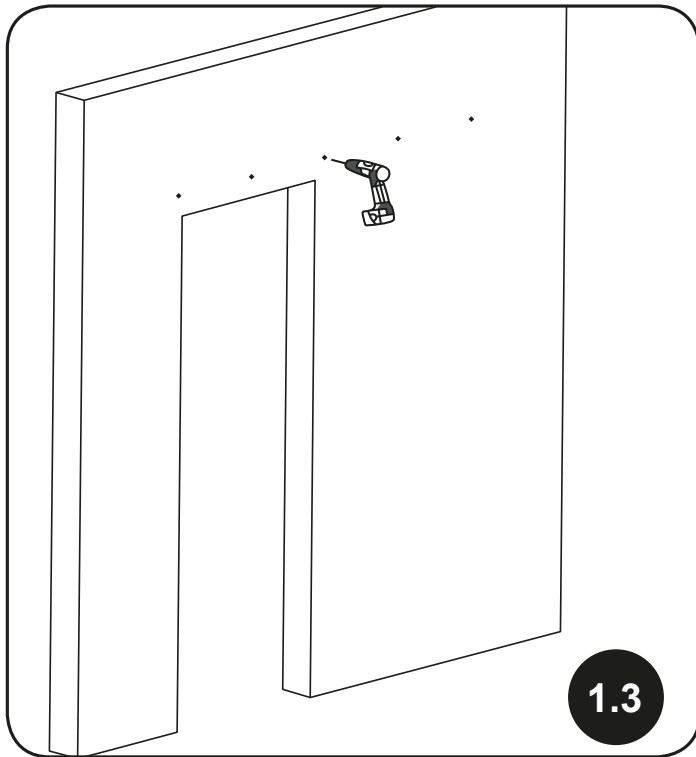
From the floor, add 1 3/4" to the height of the door being installed, to determine the center height of the rail.

Ex: Door 84" + 1 3/4" = 85 3/4" center of the rail from the floor.

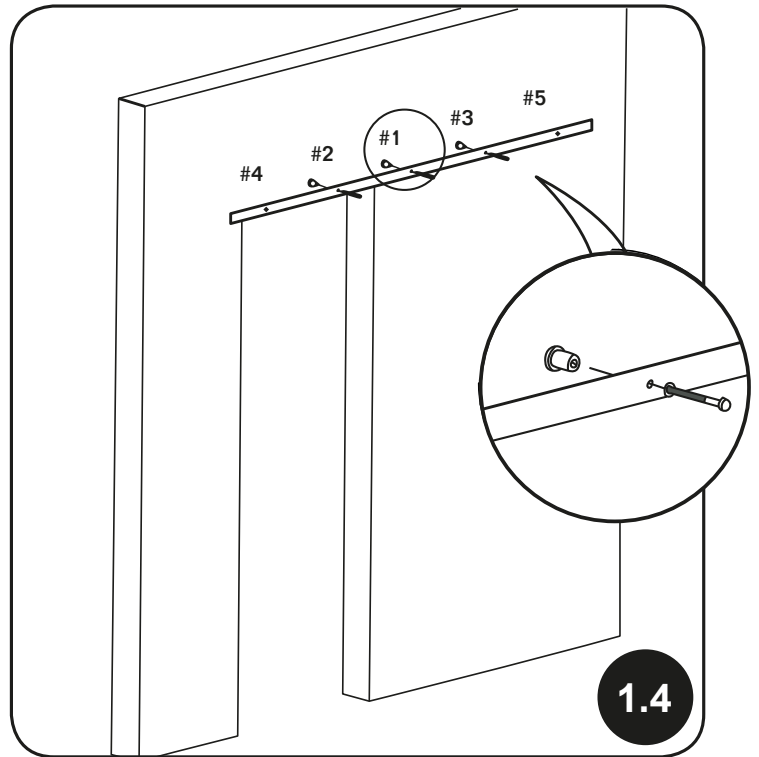


CAUTION if the rail is not installed level, the door may slide open or closed without warning.

Mark the location for each lag screw.



Drill 7/32" pilot holes at each mark.



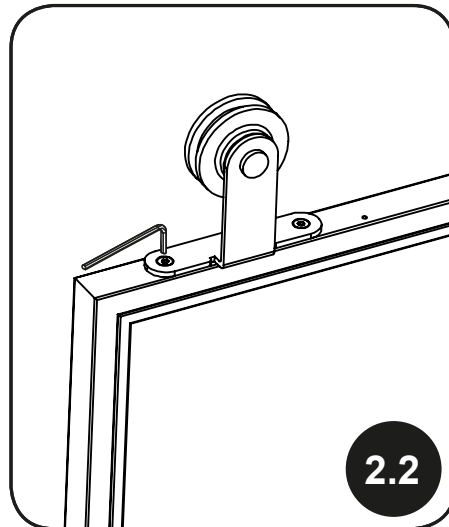
Place one lag screw through the middle hole #1 through a spacer. Do not fully tighten. Repeat process with holes #2 and #3. Use a level on top of the rail to ensure it is properly levelled, then tighten the 3 lag screws.

NOTE Lag screws #4 and #5 will be installed later.

2. Installing Door Hangers



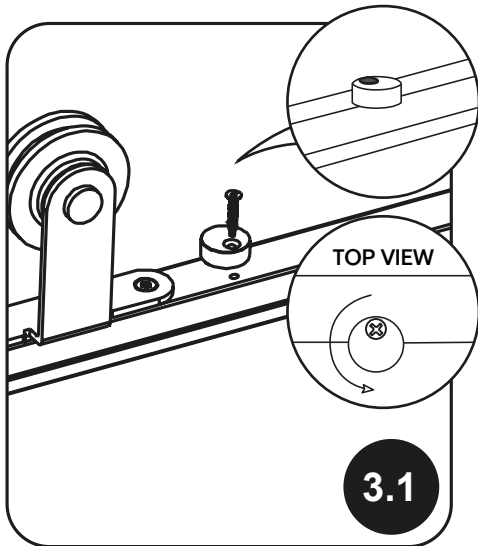
Make sure to align the trolley and the screws with the holes.



Secure the trolley by tightening both screws.

Repeat with the second trolley.

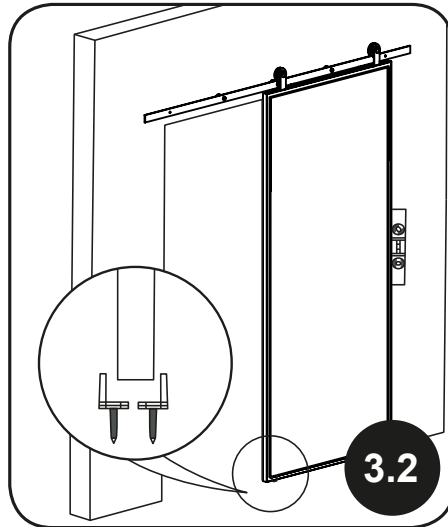
3. Complete your Installation



3.1

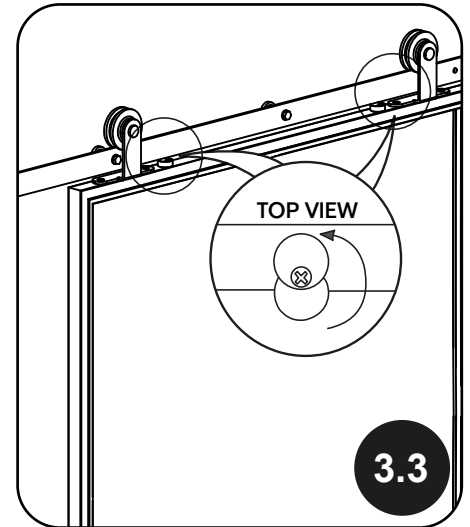
NOTE Anti-jump bumpers must be installed to prevent door from derailing.

Loosely fasten the anti-jump bumpers in the hole next to the trolley. To be able to install the door on rail, anti-jump bumpers must be turned towards the front of the door.



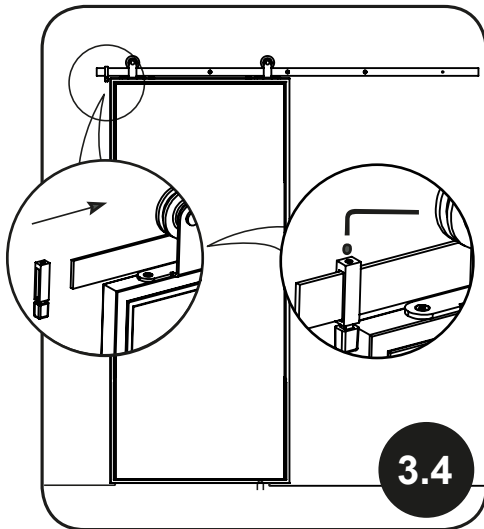
3.2

Hang the door on the rail, ensure the door is levelled then, fix the door guides on the floor on the opening side, as close to the doorway as possible.



3.3

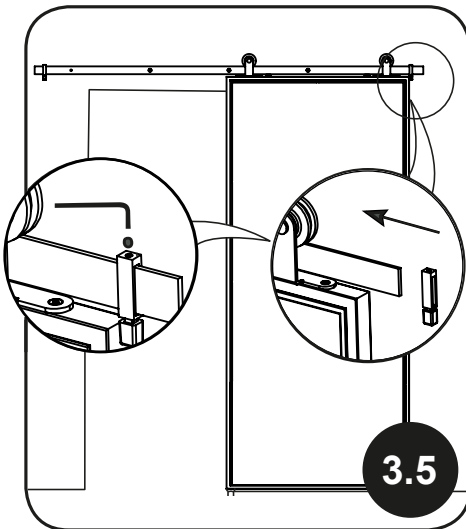
Turn anti-jump bumpers so they are on top of the door and underneath the rail. Tighten the screws.



3.4

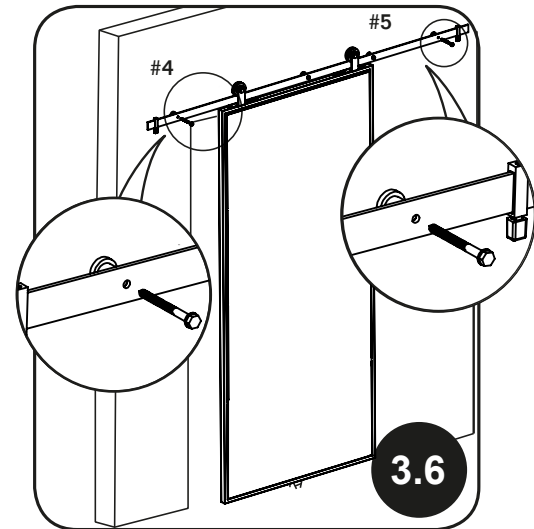
NOTE Stoppers are used to avoid the door from rolling out the edge of the rail on both ends.

Close the door to the desired position insert and secure the door stopper by tightening the screw.



3.5

Open the door to the desired position and repeat with the door stopper.



3.6

Place the 2 last lag screws through the holes and spacers on each end of the rail (#4 - #5) and fully tighten them.

DO NOT RETURN TO RETAILER

If you have any questions, please contact our customer service at:
info@colonialegance.com or call toll free at: 1-800-361-2030

VISIT OUR WEB SITE

www.colonialegance.com

***1 year limited warranty**