



# OUR COMPLETE SELECTION OF MIRROR DOORS



## Elegance

**FRAMELESS MIRROR**

- Standard and custom sizes.
- Easy sliding bottom-roll system for extra smoothness and durability.
- Choice of regular or bevelled mirrors: clear, bronze, grey, clear french.
- Frameless: white, champagne, black, brass, chrome, Wide Access.
- Sliding, bifold and pivot.



## Decorator

**WITH FRAME**

- Standard and custom sizes.
- Easy sliding bottom-roll system for extra smoothness and durability.
- Choice of mirrors: clear, bronze, grey.
- Choice of frames: white, champagne, black, brass, chrome, traditional oak 1 1/2", Cape Cod oak or Cape Cod maple 2 1/2".
- Sliding, bifold and pivot.



## Economical

**STANDARD SIZES ONLY**

- Top-roll system.
- Clear mirrors only.
- Frames: white, champagne, black, polished gold.
- Sliding and bifold.

## Panel doors

- With frame.
- Top-roll system.
- Sliding or bifold.
- Frames: white, champagne, black.

### MASONITE or MEMO



- Excellent choice for playrooms.
- Highly resistant, very safe.
- Width up to 192".
- Height up to 96".

### EMBOSSED



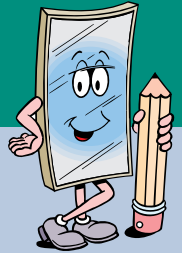
- Elegant, this door helps you to add a traditional style to any room.
- White primed
- Sliding doors only.
- Width: 36", 48", 60", 72".
- Height: 80 1/2".

### CORK



- Think about your children drawings, pictures, favorite singers, and posters, etc.
- 1 cork panel and 1 mirror panel.
- Width: 24", 30", 36", 48".
- Height: 80 1/2".

## CUSTOM SIZE DOORS



### 1. Measure the closet opening

- a) Finished width:
- b) Finished height:

### 2. Select the type of door

- Sliding     Bifold     Pivot
- Right handle     Left handle

### 3. Select mirror or panels

- MIRROR**
- Clear     Masonite white
- Bronze     Memo white
- Grey     Embossed Bostonian
- Clear Bevelled     Embossed Camden
- Clear French     Cork & mirror

### 4. Select frame

- WITH FRAME**
- White     White
- Champagne     Champagne
- Black     Black
- Chrome     Chrome
- Brass     Brass
- Cape Cod oak     Wide Access
- Cape Cod maple
- Traditional oak

## Standard sizes chart

If your finished opening does not match with one of these dimensions, ask for a "CUSTOM SIZE DOOR" manufactured to your specifications.

### WIDTH

**Sliding doors**  
36", 48", 60", 72", 96", 108", 120", 144", 192"

**Bifold doors**  
24", 30", 36", 48", 60", 72"

**Pivot doors**  
24", 30", 36"

### HEIGHT

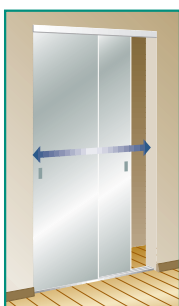
**Sliding doors**  
80 1/2" (fits openings 79 3/4" - 81 1/2")  
96" (fits openings 95 1/4" - 97")

**Bifold doors**  
80 1/2" (fits openings 80 1/4" - 81 1/2")  
96" (fits openings 95 3/4" - 96 1/2")

**Pivot doors**  
80 1/2" (fits openings 80" - 81")  
96" (fits openings 95 1/2" - 96 1/2")

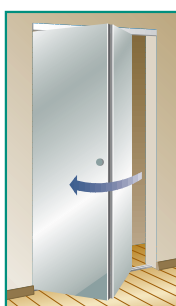
NOTE: Bifold and pivot standard doors with oak frame must have an exact height of 80 1/2".

## WHAT TYPE OF DOOR DO I NEED?



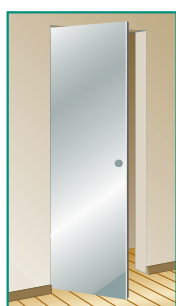
**SLIDING**  
For wide openings and large areas such as: bedrooms, family rooms and big halls.

- Access to closet: 50%
- Outside projection: 0%
- Width: Up to 192"



**BIFOLD**  
For narrow areas such as: bathrooms, hallways, and laundry rooms.

- Access to closet: 100%
- Outside projection: 50%
- Width: Up to 72"

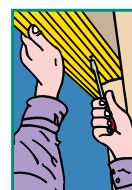


**PIVOT**  
For small openings such as: pantries, hallway closets.

- Access to closet: 100%
- Outside projection: 100%
- Width: Up to 36"

## EASY TO INSTALL

What you need: screwdriver and measuring tape.



Fix top and bottom tracks.



Install the panels.



Adjust panels with doorjamb.